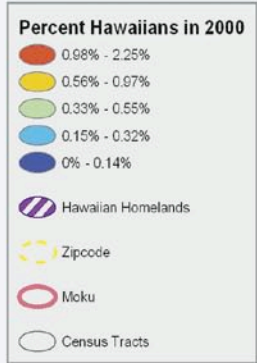


# Hawai'i County

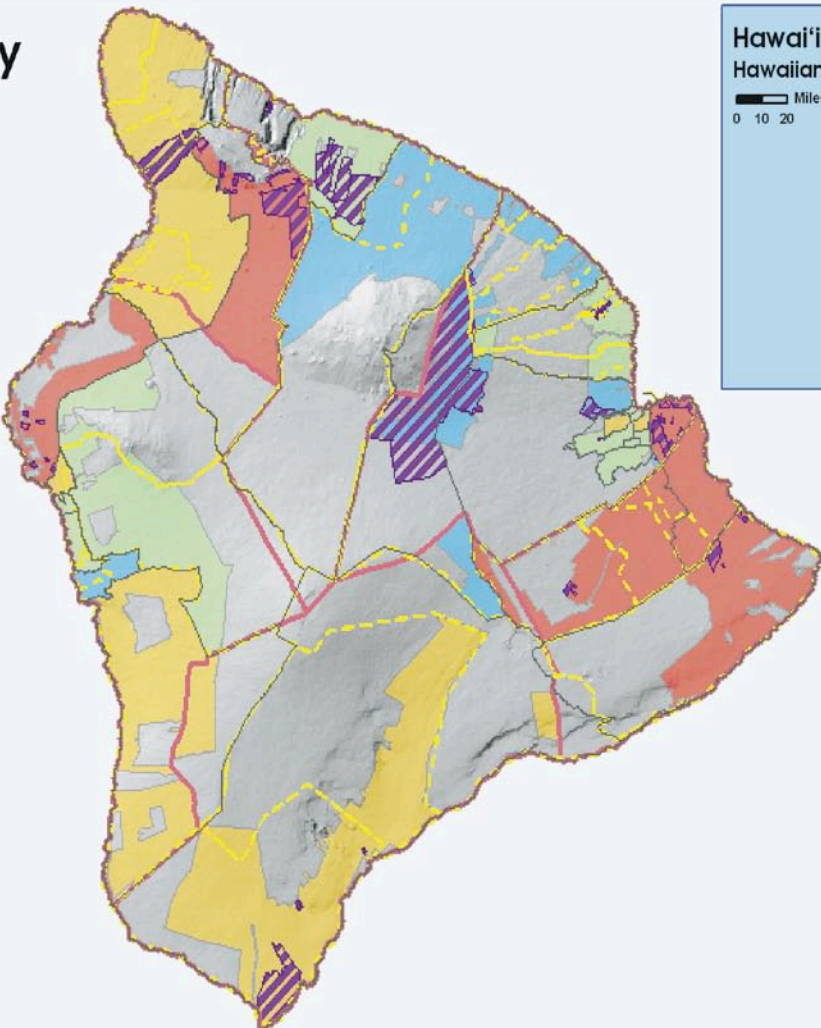
## Hawaiian Population



**NOTE:**  
 "Natural breaks" classification normalized by the total number of Hawaiians in the State.

**Sources:**  
 Census tract from Hawai'i State GIS, Feb. 2002  
 Hawaiian Homeland, and Zipcode boundaries from Hawai'i State GIS, Feb. 2002.  
 2000 Hawaiian population statistics from U.S. Census Bureau, Mar. 2003.

**Disclaimer:**  
 There are no expressed warranties associated with the release of this data. Specifically, no warranty is made that the GIS data or any subsequent updates will be error free and no warranty is made regarding the positional or thematic accuracy of the GIS data. The GIS data and any features it depicts do not represent or confer any legal rights, privileges, benefits, boundaries or claims of any kind. The Office of Hawaiian Affairs encourages users to report any discrepancies or errors found.



### Hawai'i Moku

#### Hawaiian Population

